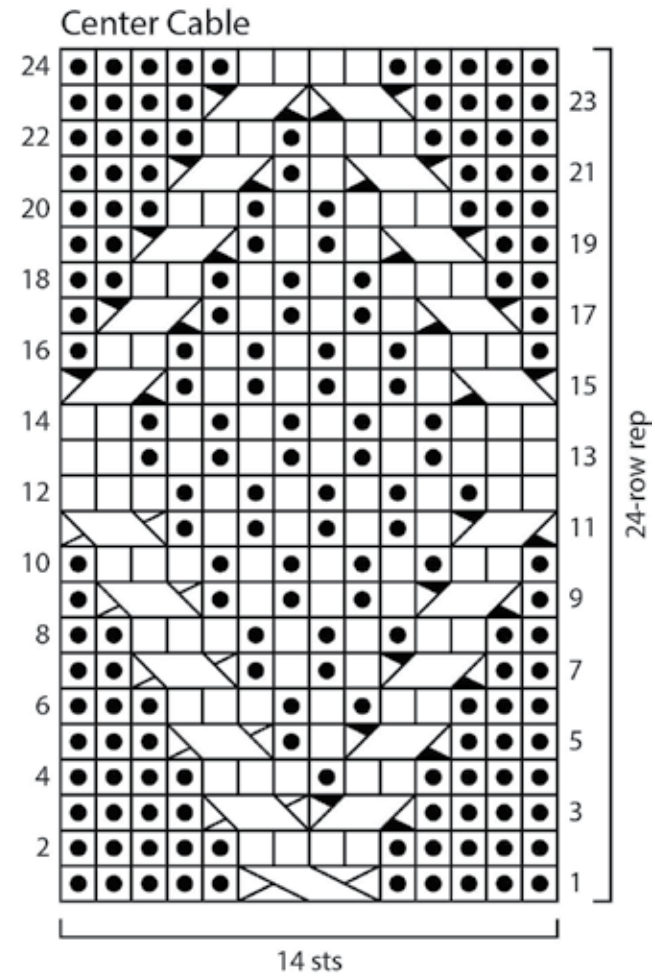
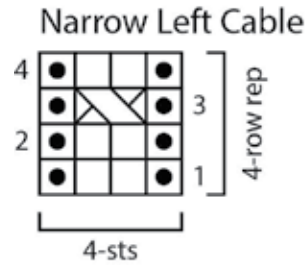
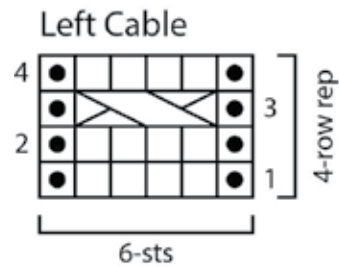
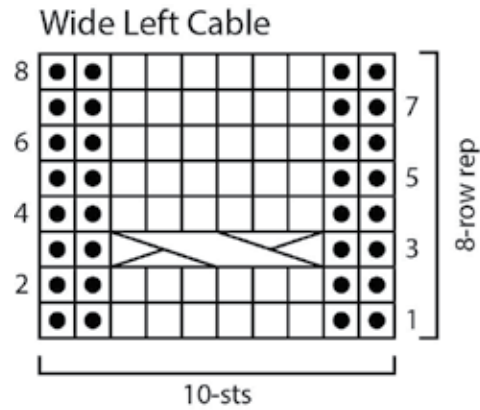


# Folklore Cardigan



**KEY**

<input type="checkbox"/>	knit on RS, purl on WS
<input checked="" type="checkbox"/>	purl on RS, knit on WS
	1/1 LC (1 over 1 left cross)
	2/1 LC (2 over 1 left cross)
	2/1 LPC (2 over 1 left purl cross)
	2/1 RPC (2 over 1 right purl cross)
	2/2 LC (2 over 2 left cross)
	3/3 LC (3 over 3 left cross)

# Folklore Cardigan

